

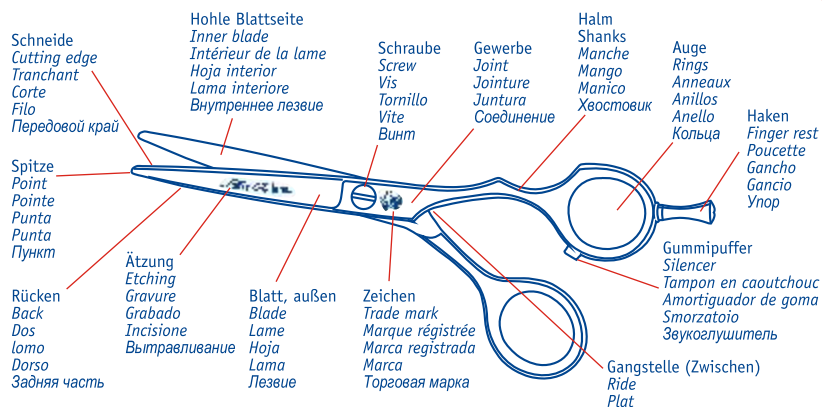
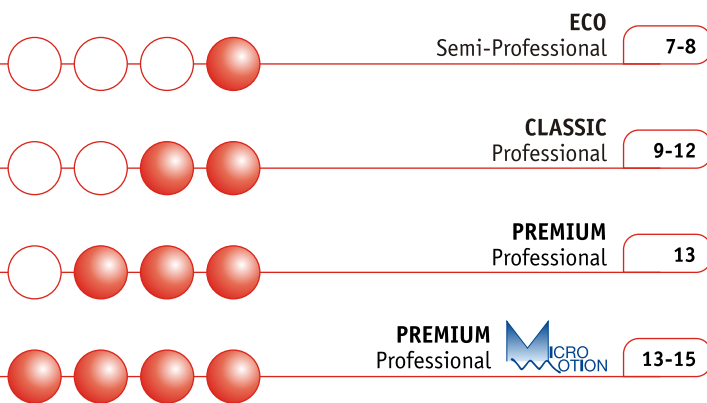
FRISEURWERKZEUGE
HAIRDRESSING TOOLS
OUTILS DE COIFFURE
HERRAMIENTAS PARA PELUQUEROS
STRUMENTI PER PARRUCHIERI
АРИКМАХЕРСКІЕ ИНСТРУМЕНТЫ



 »DOVO«
Solingen

MEISTERWERKE IN STAHL

www.dovo.com



Rasiermesserscharf / Razor sharp edge / Coupe rasoir / Afiladura de navaja / Affilatura speciale rasoio / Скользящий срез "слайсинг"



Hohlschliff + gehont / Hollow ground and honed / Lame évidée et aiguisée par "honing" / Concavo con afilatura "honing" / Concavo con affilatura "honing" / Внутренняя поверхность лезвия не плоская, а вогнутая, что обеспечивает минимальный точечный контакт двух режущих кромок при срезе, а также хонингованна.



Hohlschliff / Hollow ground / Lame évidée / Concavo / Concavo / Внутренняя поверхность лезвия не плоская, а вогнутая, что обеспечивает минимальный точечный контакт двух режущих кромок при срезе.



Konvexes Blatt / Convex blade / Lame convexe / Lama convessa / Hoja convexa / Конвекционная режущая кромка



Zahnung / Corrugation / Dentelure / Con dentadura / Con dentatura / С микронасечкой



Stellschraube / Adjustable screw / Vis réglable / Tornillo regulable / Vite regolabile / винт, регулирующий натяжение полотен ножниц



Schraubhaken / screwed-in finger rest / poucette à visser / Rabillo a rosca / poggiadito / Съёмный упор для мизинца

NI = Vernickelt / Nickel-plated / Acier nickelé / Acero niquelado / Acciaio nichelato / Никелированные

R POL = Rostfrei, poliert / Stainless steel, mirror polished / Acier inox, poli brillant / Acero inox, pulido / Acciaio inox, lucido / Из нержавеющей стали полированные

R SAT = Rostfrei, satiniert / Stainless steel satin finish / Acier inox satiné / Acero inox satinado / Acciaio inossidabile satinato / Из нержавеющей стали сатиновые

R TEF = Rostfrei, teflonbeschichtet / Stainless steel, teflon coated / Acier inox, teflonisé / Acero inox con capa teflon / Acciaio inox con strato teflon / Из нержавеющей стали с тефлоновым покрытием

LINKSHANDSCHEREN
LEFTHAND SCISSORS
CISEAUX POUR GAUCHERS
TIJERAS PARA ZURDOS
FORBICI PER MANCINI
НОЖНИЦЫ ПАРИКМАХЕРСКИЕ,
ЛЕВОСТОРОННИЕ



R SAT
409 506 = 5"

R POL
409 505 = 5"

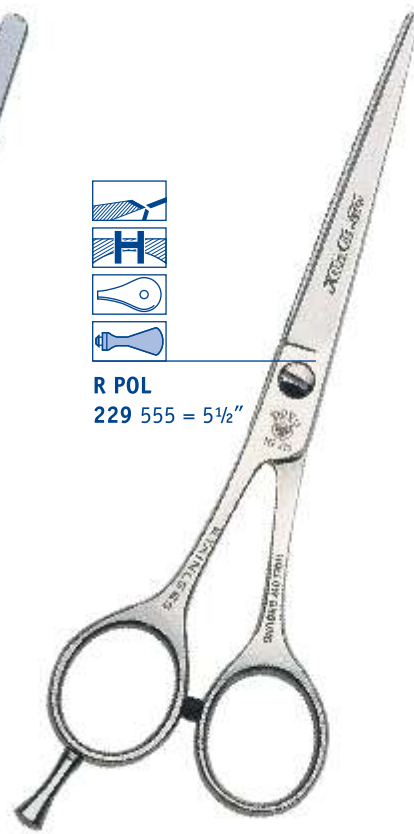


R SAT [40]
509 40546 = 5¼"

Ш40



R POL
229 555 = 5½"



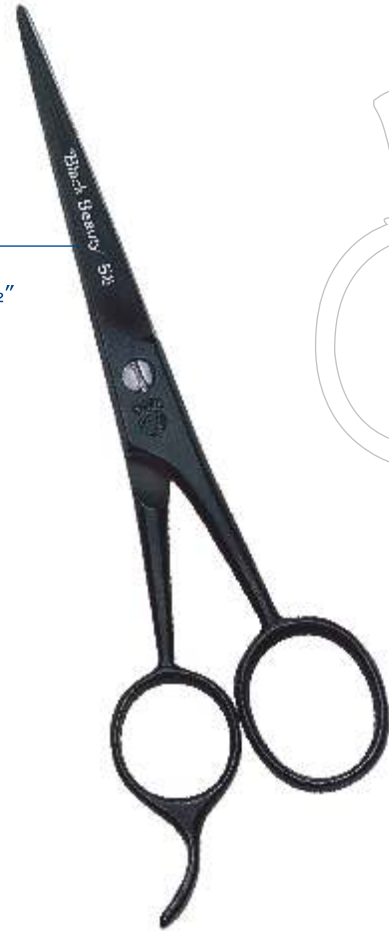


R SAT
 2200 556 = 5½"

R POL
 2200 555 = 5½"



oxy.
 2200 554 = 5½"



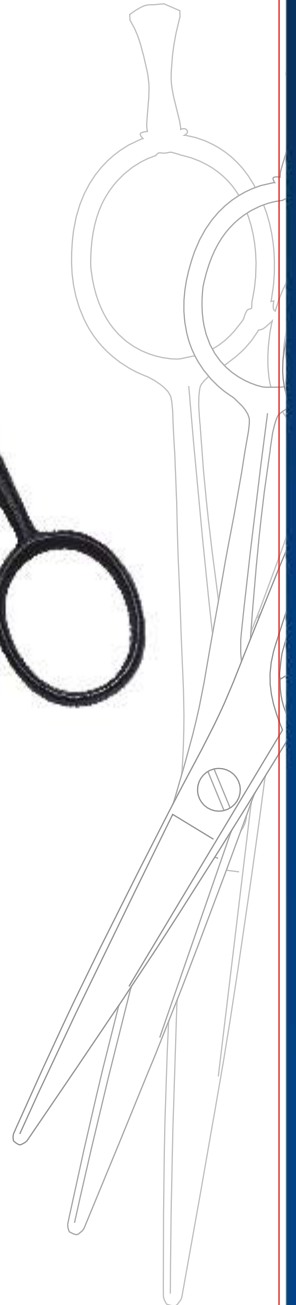
R SAT
 4 506 = 5"
 4 556 = 5½"

R POL gebogen/curved
 4 509 = 5"

NI
 4 450 = 4½"
 4 500 = 5"
 4 550 = 5½"



oxy.
 4 454 = 4½"
 4 504 = 5"
 4 554 = 5½"





HAARSCHEREN
HAIRSCISSORS
CISEAUX DE COIFFEUR
TIJERAS PARA PELUQUEROS
FORBICI PER PARRUCHERE
НОЖНИЦЫ ПАРИКМАХЕРСКИЕ



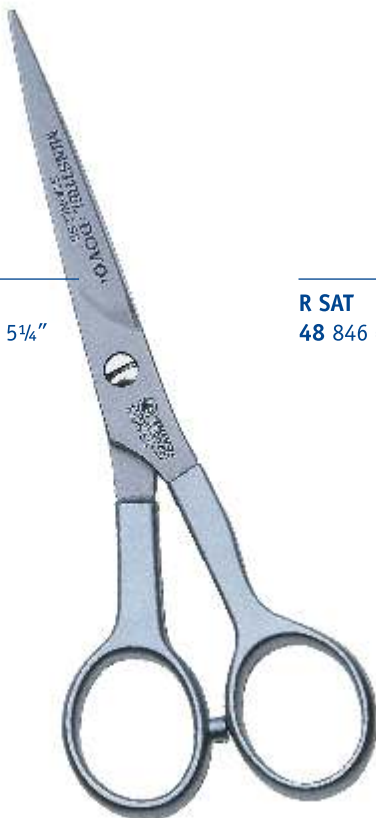
R SAT
1006 606 = 6"



R POL
1001 645 = 6 1/4"



R SAT
1006 546 = 5 1/4"



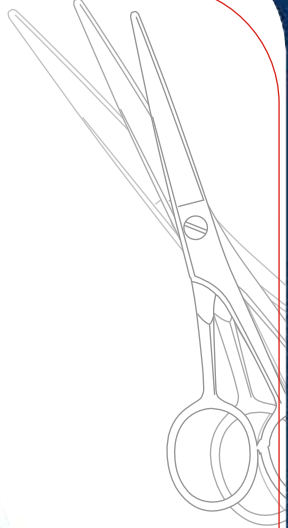
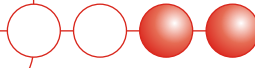
R SAT
48 846 = 8 1/4"



NI gebogen/curved
111 659 = 6 1/2"



HAARSCHEREN / EFFILIERSCHEREN
 HAIR / THINNING SCISSORS
 CISEAUX DE COIFFEUR / À EFFILER
 TIJERAS PARA PELUQUEROS / ENTRECORTAR
 FORBICI PER PARRUCHERE / SFOLTIRE
 НОЖНИЦЫ ПАРИКМАХЕРСКИЕ / ФИЛИРОВОЧНЫЕ

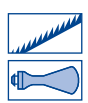


R SAT
 22 506 = 5"
 22 556 = 5½"
 22 606 = 6"
 22 656 = 6½"
 22 706 = 7"



R SAT
 15 506 = 5"
 15 556 = 5½"
 15 606 = 6"

NI
 15 600 = 6"



mit Schraubhaken:
R SAT
 16 506 = 5"
 16 556 = 5½"
 16 606 = 6"



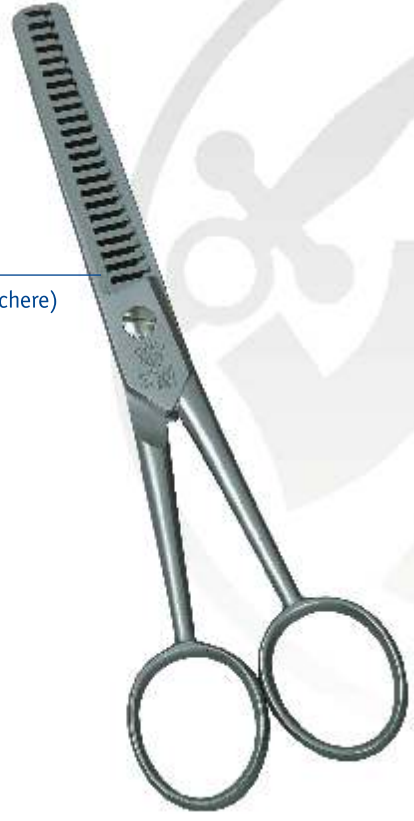
R SAT
 715 506 = 5"
 715 556 = 5½"
 715 606 = 6"



R SAT
 202 506 = 5"



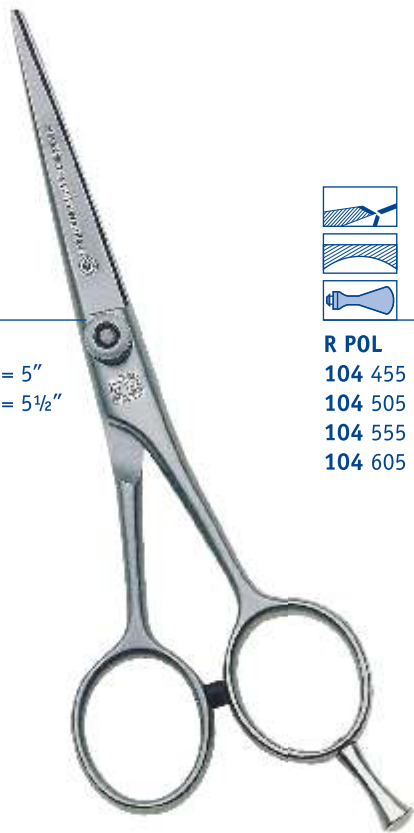
R SAT (Effilierschere)
 8 23606 = 6"





R SAT

232 506 = 5"
232 556 = 5½"



R POL

104 455 = 4½"
104 505 = 5"
104 555 = 5½"
104 605 = 6"



R SAT

20 456 = 4½"
20 506 = 5"
20 556 = 5½"
20 606 = 6"
20 656 = 6½"



20 706 = 7"



R TEF

233 5085 = 5"
233 5585 = 5½"



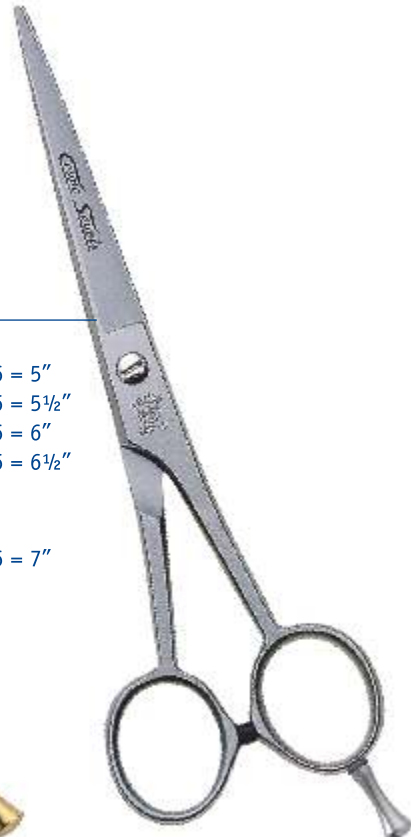
R TEF

204 4585 = 4½"
204 5085 = 5"
204 5585 = 5½"
204 6085 = 6"



R SAT

200 506 = 5"
200 556 = 5½"
200 606 = 6"
200 656 = 6½"



200 706 = 7"



R SAT [40]
 50 40547 = 5¼"



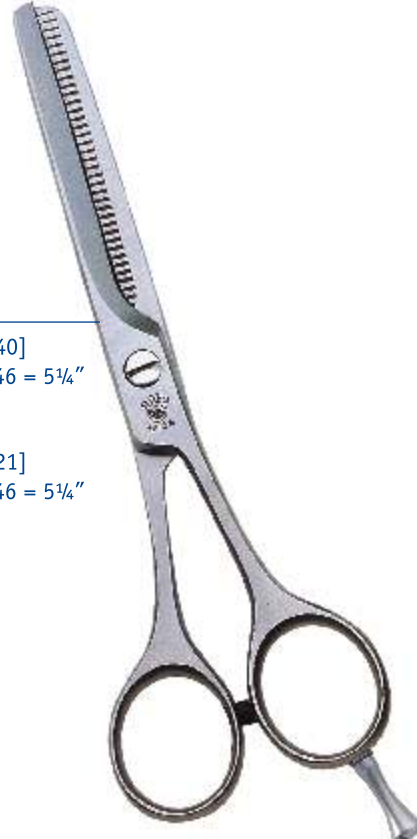
R TEF [40]
 50 405485 = 5¼"



R SAT [40]
 50 40546 = 5¼"



R SAT [21]
 50 21546 = 5¼"



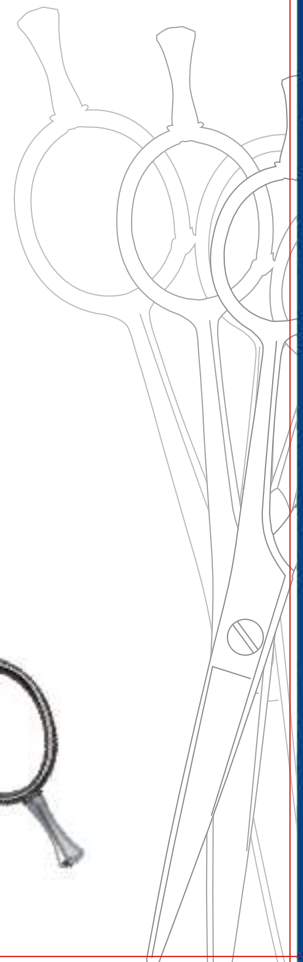
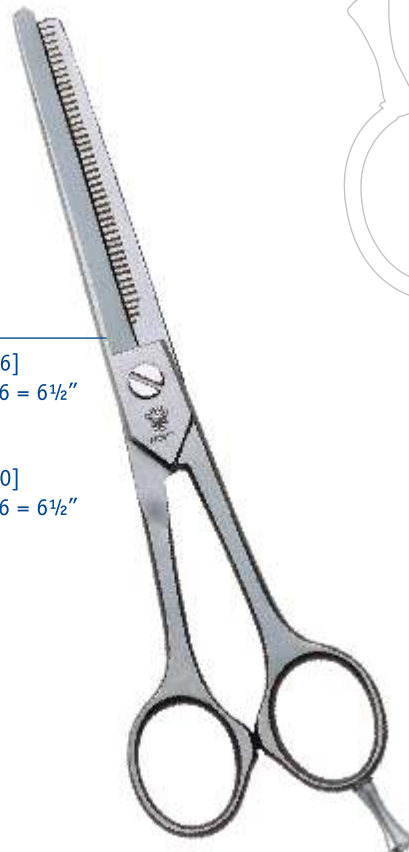
R POL [46]
 50 46655 = 6½"



R SAT [46]
 50 46656 = 6½"



R SAT [30]
 50 30656 = 6½"





EFFILERSCHEREN
THINNING SCISSORS
CISEAUX À EFFILER
TIJERAS PARA ENTRECORTAR
FORBICI PER SFOLTIRE
НОЖНИЦЫ ФИЛПРОВОЧНЫЕ

R SAT [40]
10 40556 = 5½"

Ш40



oxy. [40]
10 40554 = 5½"

Ш40



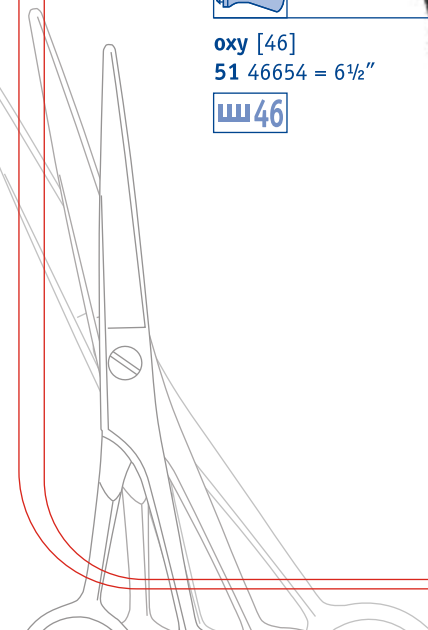
oxy [46]
51 46654 = 6½"

Ш46



NI [46]
19 46701 = 7"

Ш46





R POL
 236 505 = 5"



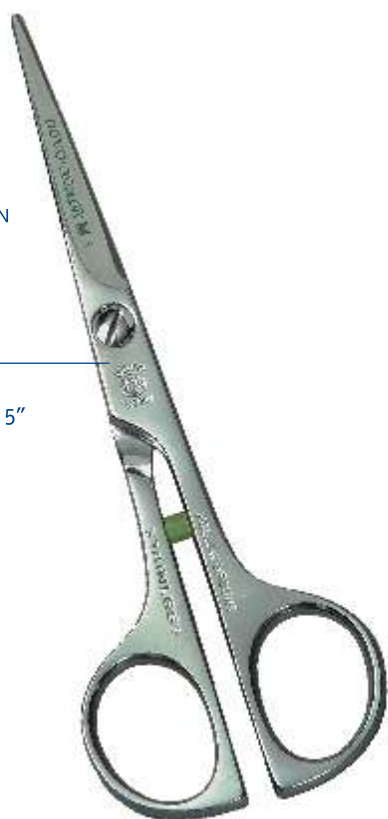
R POL
 237 555 = 5½"



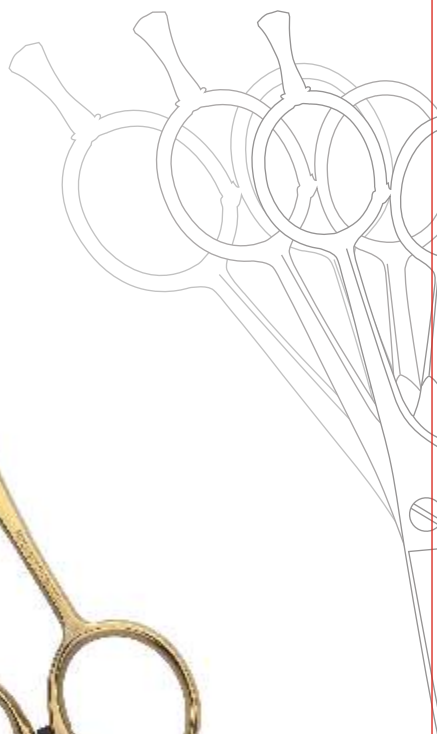
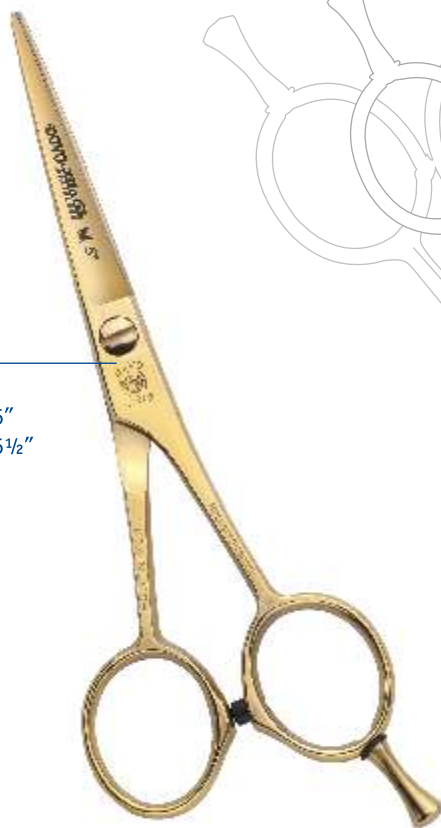
R SAT
 242 556 = 5½"



R POL
 207 515 = 5"



R POL verg.
 205 515 = 5"
 205 555 = 5½"





HAARSCHEREN / EFFILIERSCHEREN
HAIR / THINNING SCISSORS
CISEAUX DE COIFFEUR / À EFFILER
TIJERAS PARA PELUQUEROS / ENTRECORTAR
FORBICI PER PARRUCHERE / SFOLTIRE
НОЖНИЦЫ ПАРИКМАХЕРСКИЕ / ФИЛИРОВОЧНЫЕ



R SAT
2000 556 = 5½"



R SAT
238 556 = 5½"
238 656 = 6½"



½ R POL / ½ R SAT [32]
538 32558 = 5½"



½ R POL / ½ R SAT
243 608 = 6"

R POL
243 605 = 6"

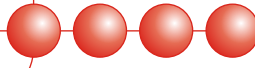


R POL Plasma Coated
244 5085 = 5"
244 5585 = 5½"
244 6085 = 6"



R POL Plasma Coated
[40]
544 406085 = 6"





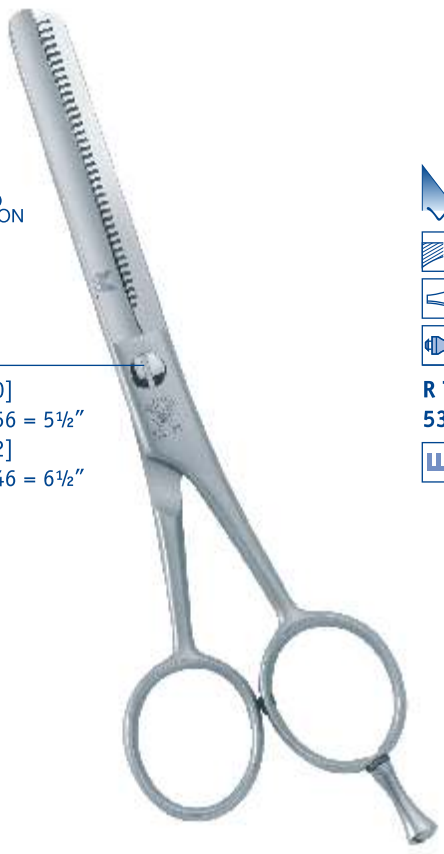
R SAT
 239 546 = 5¼"



R SAT
 240 456 = 4½"
 240 506 = 5"
 240 556 = 5½"
 240 606 = 6"



R SAT [40]
 532 40556 = 5½"
R SAT [42]
 532 40646 = 6½"



R TEF [40]
 534 405585 = 5½"





R POL
Griffschale: R SAT
201 006

ALU silber
Griffschale: R SAT
201 087



ALU gold
201 083



ALU silber
201 081



R POL
201 000

Klingensysteme austauschbar
Exchangeable blade systems



201 003

Halter für / Holder for:



201 013



201 004

Halter für / Holder for:



201 014



201 005

Halter für / Holder for:



201 015



Cellidur, weiß
R
42 285 = 2/8"
42 385 = 3/8"
42 485 = 4/8"



189 000